

LOOK
FORWARD
看·建未來

EMPLOYMENT OUTCOME OF 2021 GRADUATES





Class Profile of 2021 Graduates*

Class Size

53

**Chinese
Language
Capability**

58%

**Average
Age**

30

**Average
Work
Experience**

5.8yrs

Nationality

10

**Male /
Female**

77%/23%

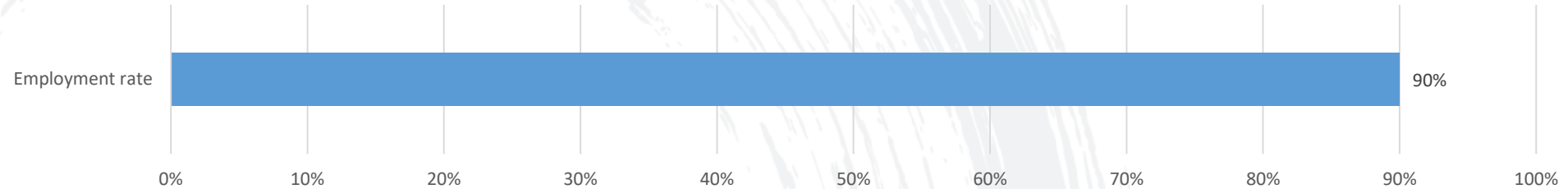
Remarks:

* Graduation date when students completed their course requirements and received Senate approval in Academic Year 2020-2021 is used.

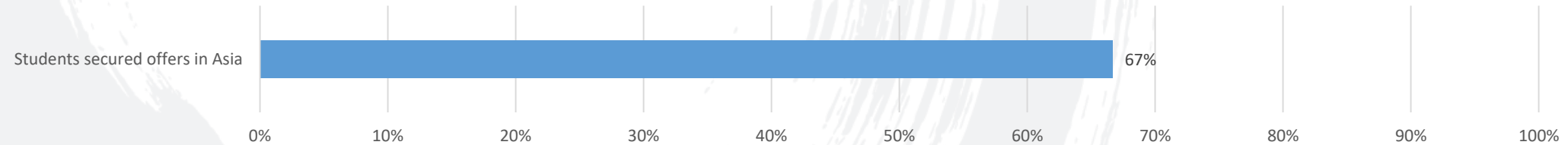


Employment Status - Highlights

Employment Rate 3 months at Graduation*



Students secure offers in Asia**



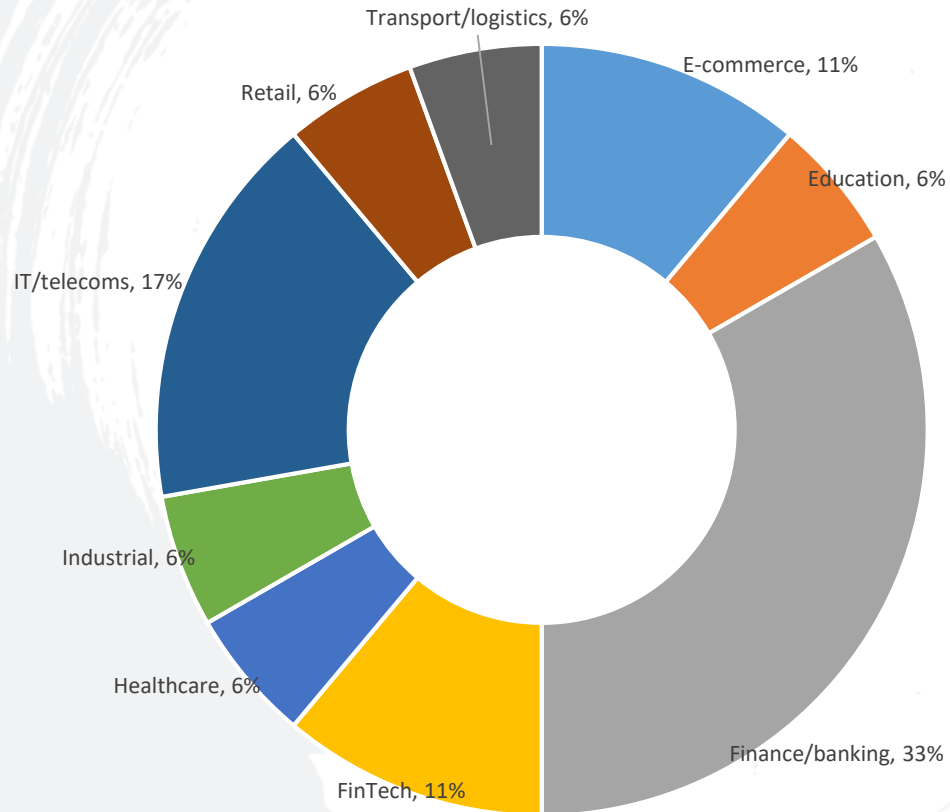
Remarks:

* Graduation date when students completed their course requirements and received Senate approval in academic year 2020-2021 is used.

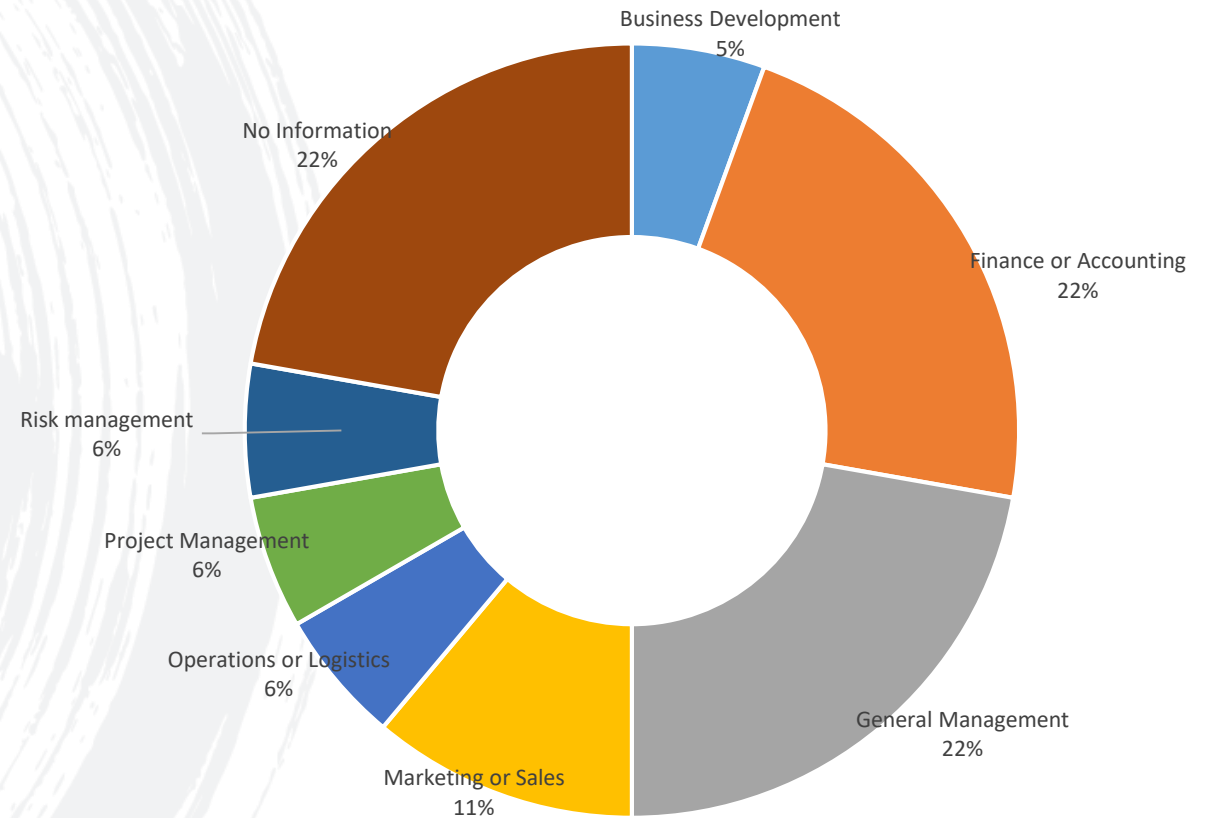
** Figures based on the usable data from 67% of students who secured offers.

Employment Status – Industry & Function Distribution

Industry Distribution*



Function Distribution*



Remarks*: Figures based on the usable data from 67% of students who secured offers.

Employment Status – Jobs by Location



CUHK
BUSINESS SCHOOL



Remarks*: Figures based on the usable data from 67% of students who secured offers.

Recruiting Partners

Accenture	Danaher Corporation	L'Oreal
adidas	DBS	Lalamove
Agorize	Dell	Lazada Group
Al Link Group	Deloitte	Lenovo Group
AIA International Limited	DFS Group	LinkedIn
Alibaba	DHL Consulting	LU.com
Alpha Sights	DiDi	LVMH
ALTIOS International	East West Bank	Lynk
Alton Aviation Consultancy	Ernst & Young	Maison Capital
Amaris	Estee Lauder Companies	Mars
Amazon	Facebook	McKinsey & Company
Ant Financial	Fidelity	Meiyume
Anthea Cooper	foodpanda	Microsoft
Apple	Fossil Group	NetEast
Asia Care Group	Fosun	Nestle Korea (Nespresso Division)
Asia Socirty Hong Kong	FTI Consulting	Nike Inc.
Baidu	Fung Group	Panamasia Financial
Bain & Company	Galaxy Holding Group	PCCW Limited
Baker & McKenzie	GAP Inc.	Pernod Ricard Asia
Bank of America	GlaxoSmithKline (GSK)	Philips
Lynch	Google	Ping An
Bank of China	Hang Seng Bank	Procter & Gamble (P&G)
BASF	Hewlett Packard Enterprise	Prudential Hong Kong Limited
BLU Artificial Intelligence	HK Express	Puma
Boston Consulting Group	Hong Kong Disneyland	PwC
BSK Corporation	HKEX	Renault-Nissan Alliance
Business for Social Responsibility	HKSTP	Richemont Asia Pacific
Capco	HKT	Samsung Securities
Capgemini	HQ capital Asia Limited	Sia Partners
Carlsberg Brewery	HSBC	Societe Generale
Cash Financial Services Group	Huawei	Sun Life
Cathay United Bank	IBM	Synpulse
Celestial Asia Securities	INFINITI Motor Company	Take2Health
China International Capital	Infosys Consulting	Tencent
Corporation Limited (CICC)	Intel	Thermo Fisher
China Merchants Bank	J.P. Morgan	Unilever
Cisco	Jardine Matheson	Vanke (China) Co., Ltd
Coca-Cola	JD.com	Vivo
Cognizant Technology	Johnson & Johnson	Walmart China
Credit Suisse	Klook	WeLab
Ctrip Technology	KPMG	West 22nd Capital
		ZS Associates

